

**2013
EASTERN
SOFT WINTER
WHEAT
CROP REPORT**

Compiled by
Jan Levenhagen
The Mennel Milling
Company



U.S. WHEAT PRODUCTION by CLASS (BU X 1000)

		10 year average	2012	2013	% DIFFERENCE	10 year average % DIFFERENCE
HARD RED WINTER		939,549	1,003,856	791,364	(21.17)	(15.77)
HARD RED SPRING		490,639	504,520	474,823	(5.89)	(3.22)
SOFT RED WINTER		394,973	419,801	542,145	29.14	37.26
HARD WHITE WINTER	*	17,355	13,250	11,860	(10.49)	(31.66)
SOFT WHITE WINTER	*	219,677	208,295	197,236	(5.31)	(10.22)
SOFT WHITE SPRING	*	32,388	28,974	27,483	(5.15)	(15.14)
HARD WHITE SPRING	*	7,518	8,465	8,974	6.01	19.36
DURUM		84,472	81,956	60,200	(26.55)	(28.73)
TOTAL		2,186,571	2,269,117	2,114,085	(6.83)	(3.32)
	*	8 year average				

Total U.S. wheat production, at 2.11 billion bushels is down 7% from last year and 3% from the previous 10 year average. The U.S. yield is forecast at 46.2 bushels per acre, down 0.1 bushel from last year.

Winter wheat production is forecast at 1.54 billion bushels, down 6% from 2012. The U.S. yield is forecast at 47.8 bushels per acre, up 0.6 bushel from last year. If realized, this will equal the U.S. record high yield established in 1999.

Hard Red Winter production, at 791 million bushels, is down 21% from last year and down 16% from the previous 10 year average. **Hard White Winter**, at 11.9 million bushels, is down 10% from 2012 and down 32% from the previous 8 year average.

Soft Red Winter, at 542 million bushels, is up 29% from 2012 and up 37% from the previous 10 year average. **Soft White Winter**, at 197 million bushels, is down 5% from last year and down 10% from the previous 8 year average.

Durum wheat production is forecast at 60.2 million bushels, down 27% from 2012 and down 29% from the previous 10 year average. The U.S. yield is forecast at 40.1 bushels per acre, up 1.1 bushel from last year.

Other spring wheat production is forecast at 511 million bushels, down 6% from last year. The U.S. yield is forecast at 42.8 bushels per acre, 2.2 bushels below 2012. Of the total production, 475 million bushels are **Hard Red Spring** wheat, down 6 percent from last year and down 3% from the previous 10 year average. **Hard White Spring**, at 9 million bushels, is up 6% from last year and up 19% from the previous 8 year average. **Soft White Spring**, at 27 million bushels, is down 5% from 2012 and down 15% from the previous 8 year average.

Canadian Production 2013

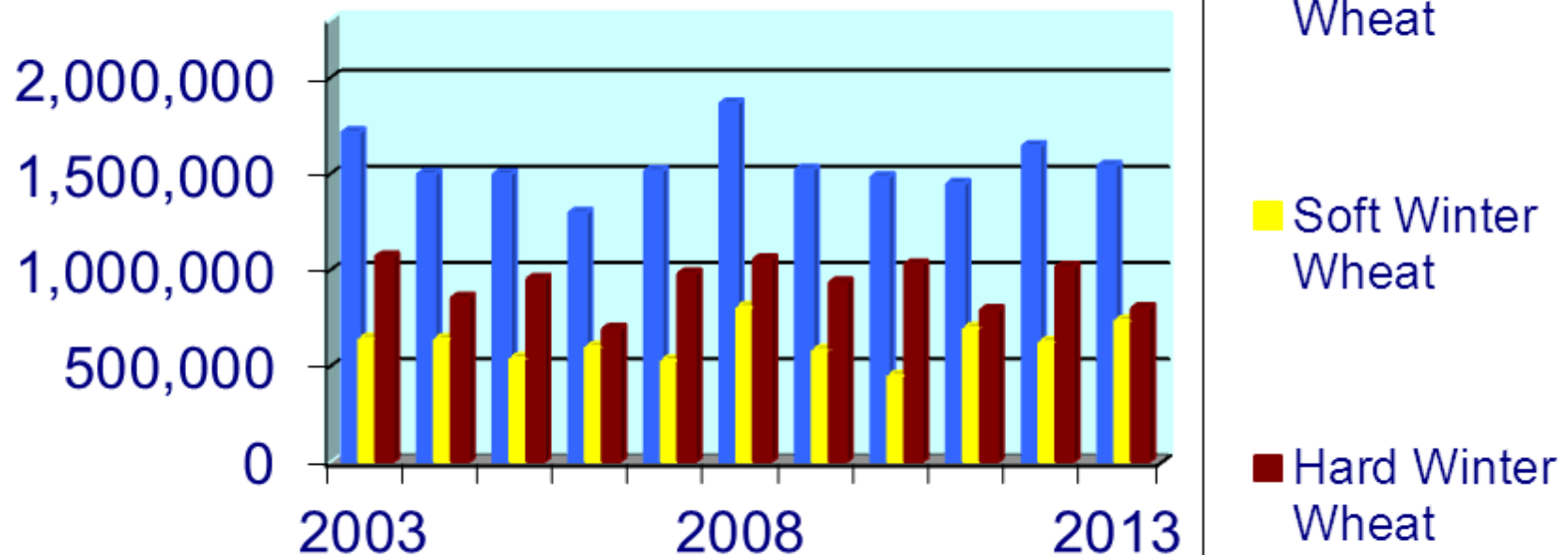
(thousands of tonnes)

Crop	2008	2009	2010	2011	2012	2013	2012 to 2013 % change
Total wheat	28,611	26,848	23,167	25,288	27,205	30,562	12.34
Spring wheat	18,405	18,452	17,485	17,866	18,720	21,830	16.61
Durum wheat	5,519	5,400	3,025	4,172	4,627	5,117	10.60
Winter wheat	4,687	2,996	2,657	3,080	3,716	3,615	(2.72)

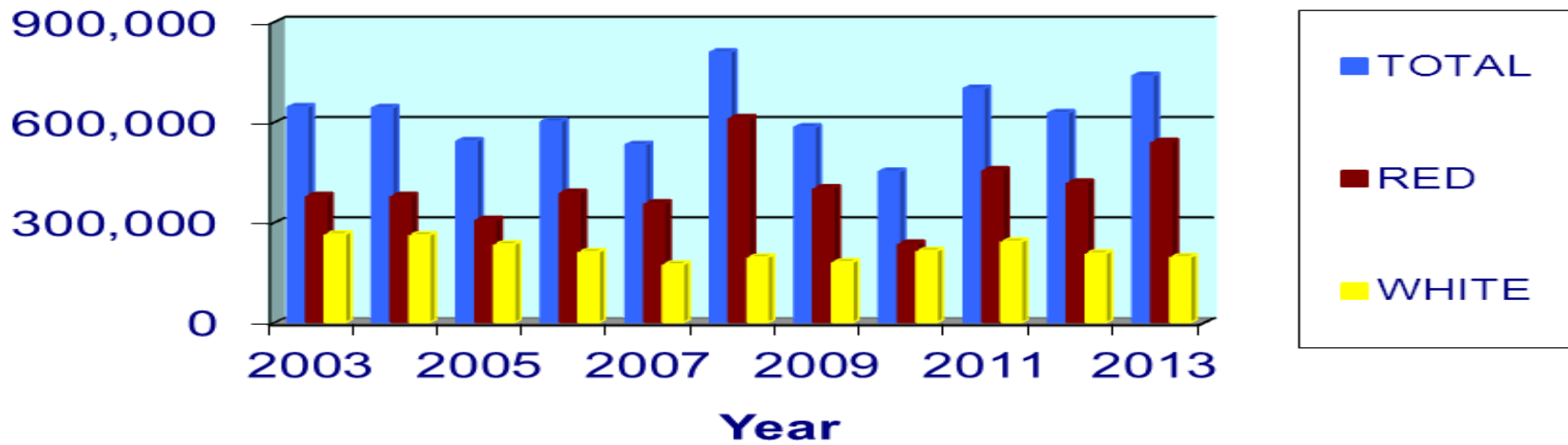
Statistics Canada - Estimate of Production of Principal Field Crops

Total Canadian wheat production was forecast at 30,532,000 tonnes, up 12% from 27,205,000 tonnes in 2012, including **spring wheat** at 21,830,000 tonnes, up 17% from 18,720,000 tonnes, **durum** at 5,117,000 tonnes, up 11% from 4,627,000 tonnes, and **winter wheat** at 3,615,000 tonnes, down 3% from 3,716,000 tonnes a year ago. Wheat production is forecast to be the highest since 1991 when farmers produced 31.9 million tons. Wheat production rose largely as the result of increased harvest area and increased yields, up 3.3% to 44.0 bushels per acre.

U.S. WINTER WHEAT PRODUCTION (x 1,000 BUSHELS)



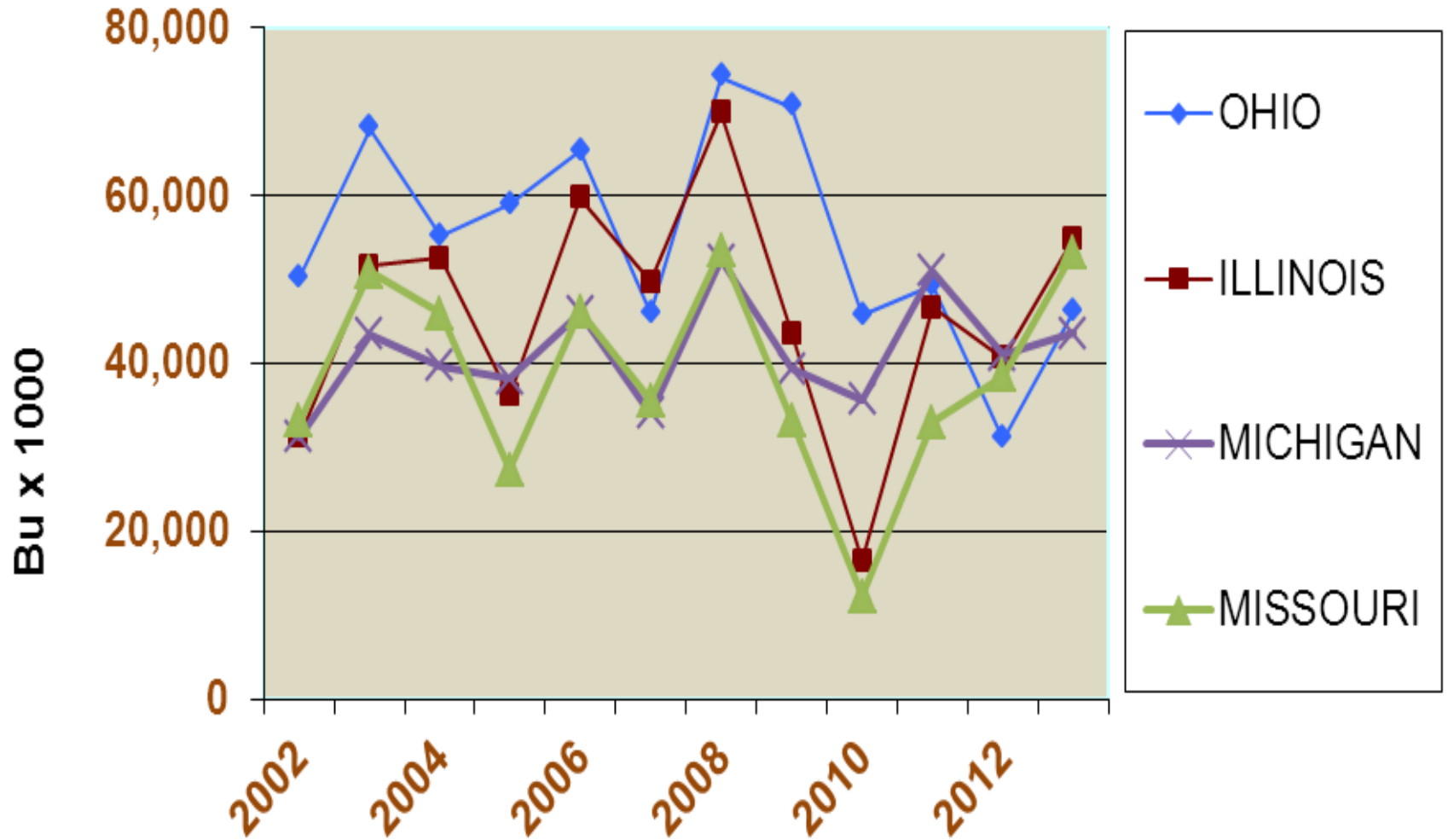
Soft Winter Wheat Production (X1000Bushels)



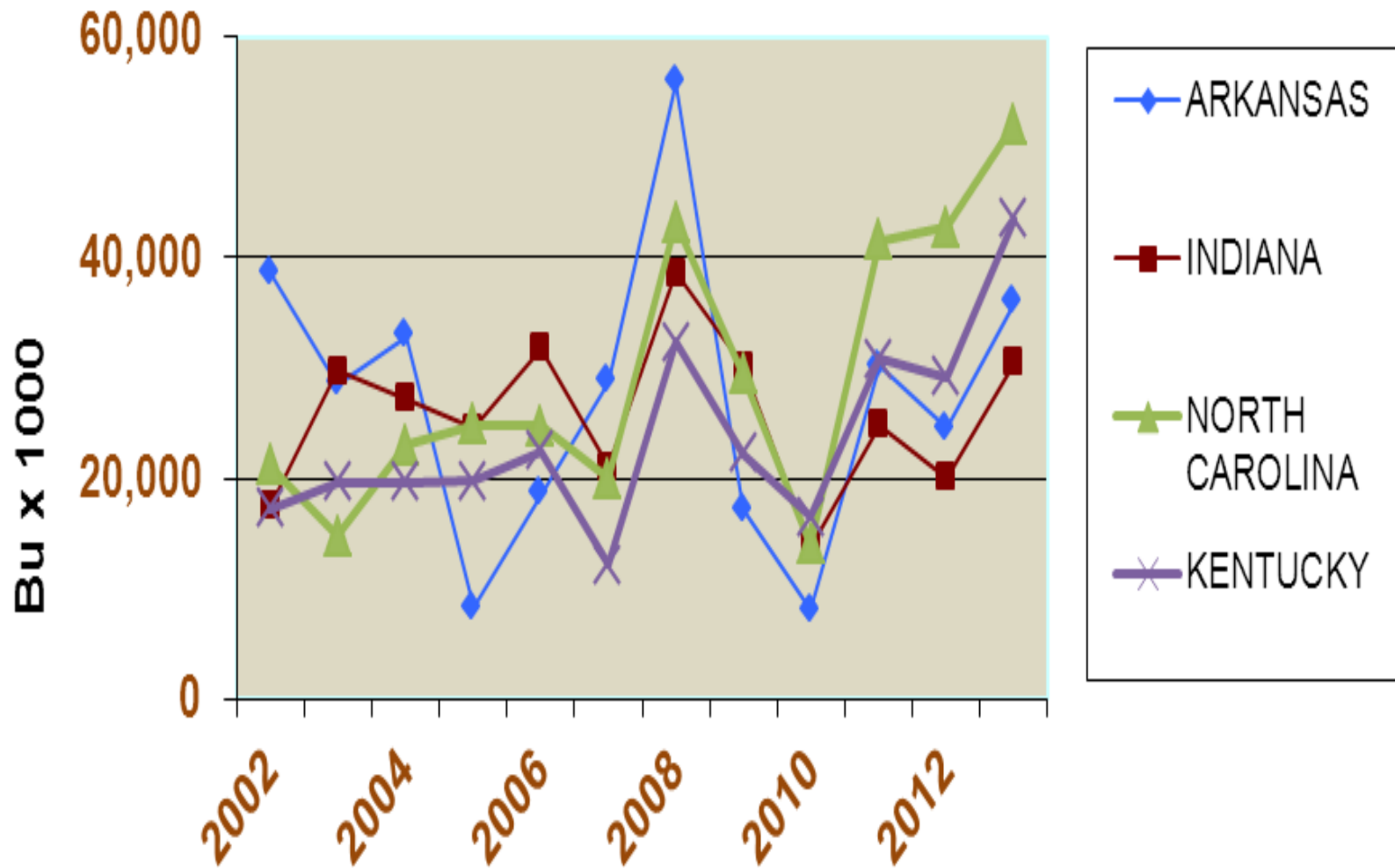
EASTERN UNITED STATES SOFT WINTER WHEAT PRODUCTION

	10 year ave.		2012		2013		PROD. DIFF (%)	10 year ave. PROD. DIFF (%)
	PRODUCTION X 1000 BU	YIELD BU/ACRE	PRODUCTION X 1000 BU	YIELD BU/ACRE	PRODUCTION X 1000 BU	YIELD BU/ACRE		
ILLINOIS	46,723	61	40,635	63	54,940	67	35.2	17.6
MISSOURI	37,654	51	38,543	57	53,234	56	38.1	41.4
NORTH CAROLINA	27,823	52	42,750	63	52,080	56	21.8	87.2
OHIO	56,416	66	31,050	69	46,240	68	48.9	(18.0)
MICHIGAN	42,085	69	41,040	76	43,660	74	6.4	3.7
KENTUCKY	22,475	63	29,140	62	43,500	75	49.3	93.5
ARKANSAS	25,277	53	24,503	55	35,922	59	46.6	42.1
TENNESSEE	16,119	56	21,420	63	33,320	68	55.6	106.7
INDIANA	26,175	65	20,100	67	30,530	71	51.9	16.6
MISSISSIPPI	12,344	55	19,665	57	21,660	57	10.1	75.5
GEORGIA	10,154	47	11,270	49	19,250	55	70.8	89.6
VIRGINIA	12,432	61	15,600	65	18,560	64	19.0	49.3
MARYLAND	10,298	63	14,280	68	16,750	67	17.3	62.7
WISCONSIN	16,717	67	17,824	75	16,568	61	(7.0)	(0.9)
SOUTH CAROLINA	7,931	47	11,660	53	12,985	53	11.4	63.7
PENNSYLVANIA	8,770	56	9,331	65	10,940	65	17.2	24.7
NEW YORK	5,717	59	5,194	63	7,256	68	39.7	26.9
TOTAL	408,224	57	426,877	61	550,266	62	23	34.8
			Record Low		Record High			

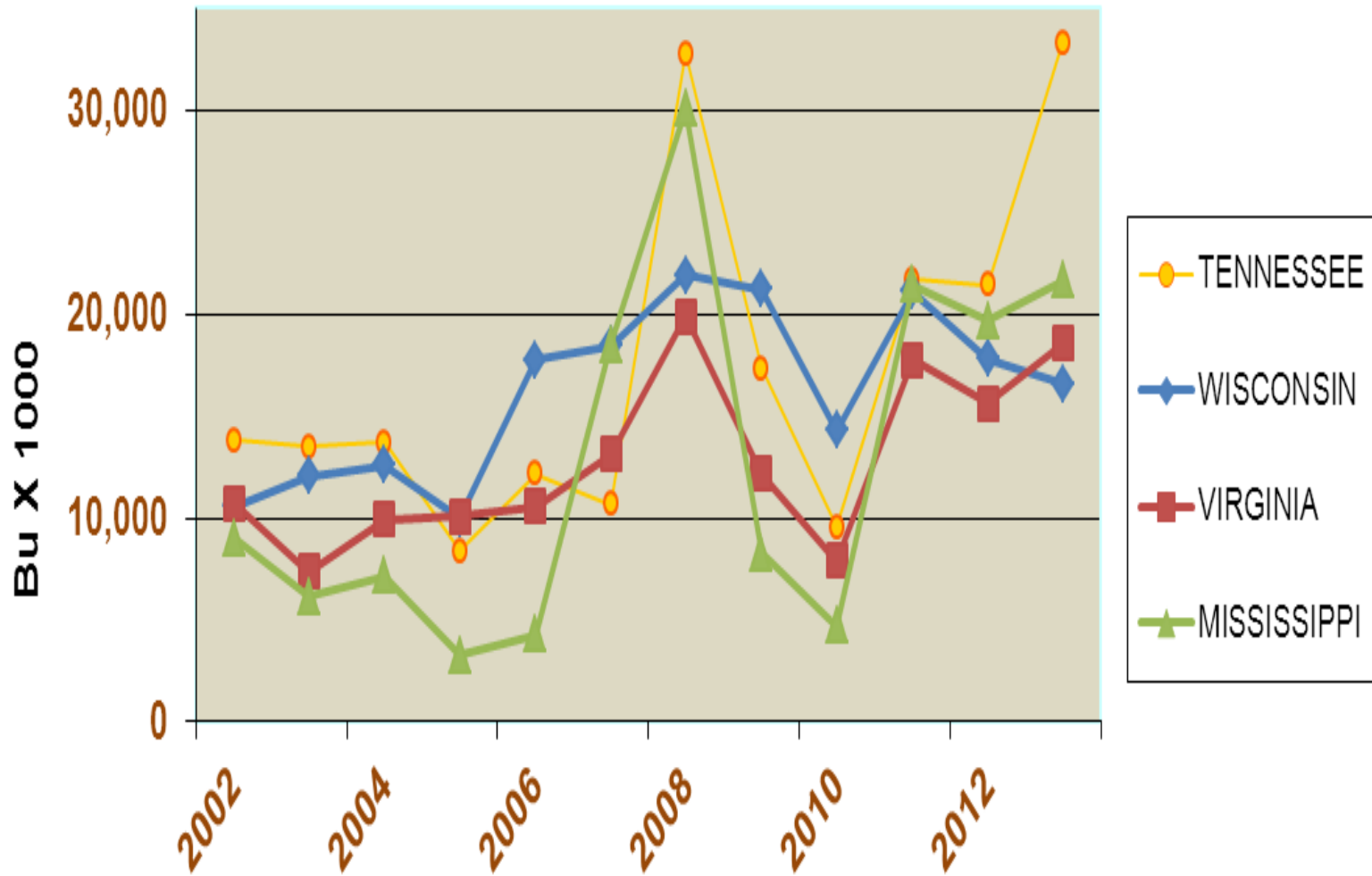
Top Soft Wheat Producing States



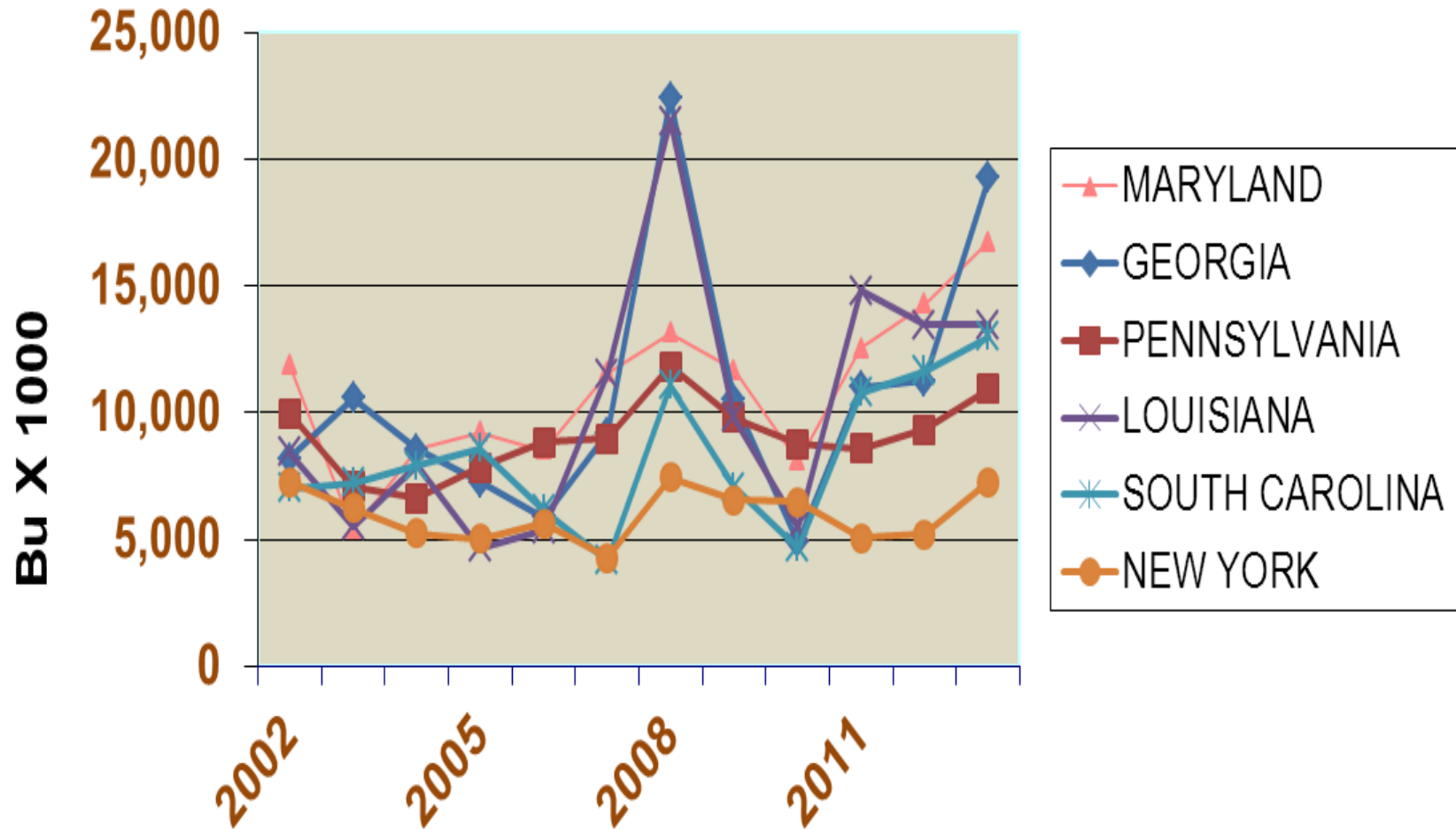
Soft Wheat Production



Soft Wheat Production



Soft Wheat Production



SOFT WHEAT CROP REPORT 2013

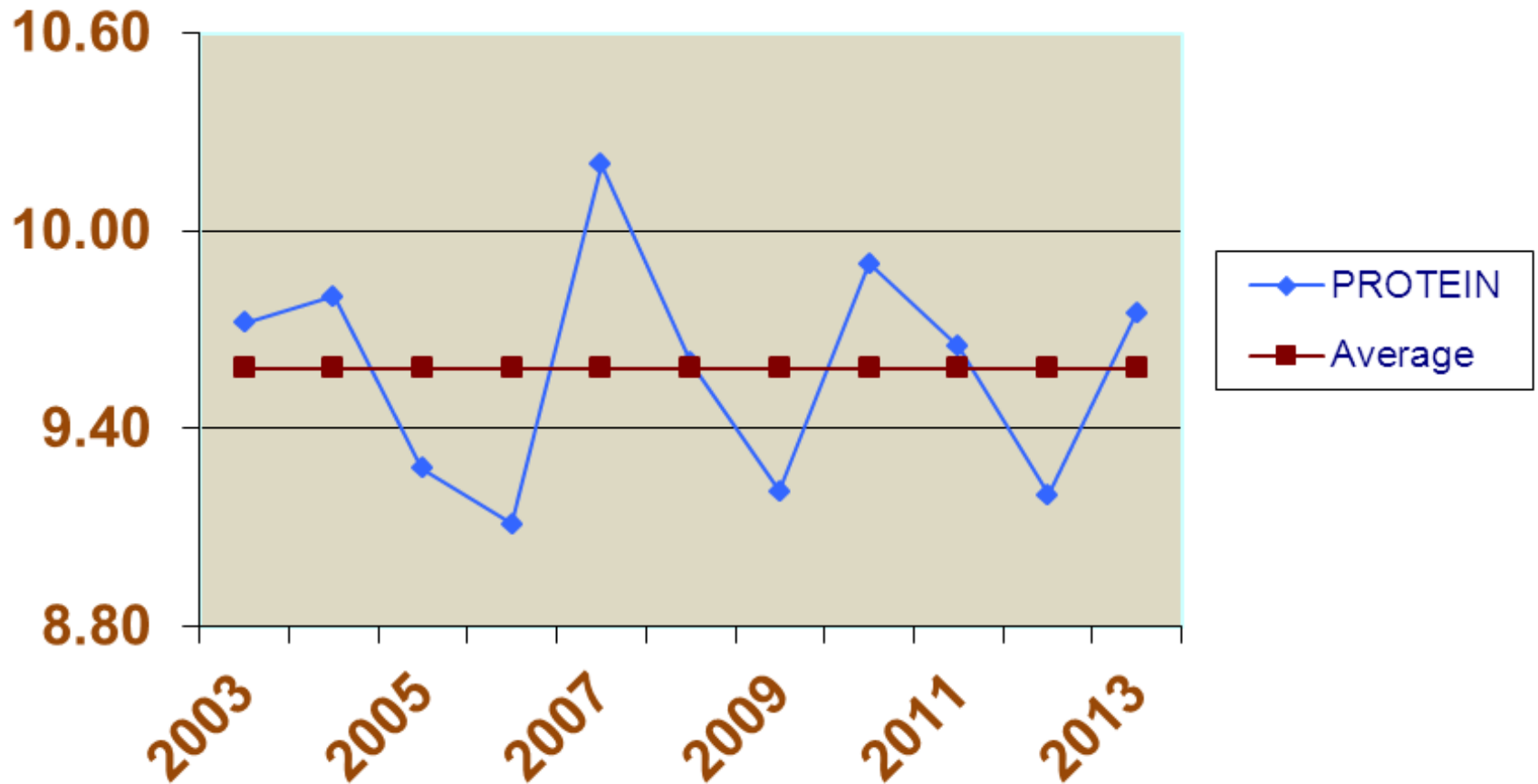
ORIGIN	TEST WEIGHT	MOIST	WHEAT		DAMAGE/AMT	PROTEIN	ASH	ST. GRADE FLOUR		AMYLO
			PRO	FN				VISC.	COOKIE SPREAD	
ILLINOIS										
SE Central IL	58.9	13.50	9.66	288	Sprout damage ~ 2.53; Ave. Vom = 0.73 ppm	8.15	0.450	91.0		450(65g,460ml buffer)
S. Central IL	57.7	12.50	9.80	323	DON = 2.2 ppm	7.93	0.464			
S. Central IL	59.0	13.40	8.40	294	DON = 1.2 ppm	7.99	0.451			
S. Central IL	56.9	13.40	7.40	286	DON = 0.1 ppm	8.03	0.451			
Central IL	58.9	13.70	10.10	309	DON = 2.5 ppm	8.05	0.444			
MISSOURI										
Missouri	60.3	12.23	10.32	390	Vomitoxin <0.3	8.89	0.494			Flour FN = 420
OHIO										
Northwest OH	60.5	13.23		282	Sprout, Ave. vom = 0.55	7.87	0.430			Flour FN = 229
Northwest OH	61.0	13.50	9.75	339	Rejecting on FN	8.01	0.430	79.0		240(60g,450ml H ₂ O)
Southwest OH	59.6	12.70	9.20	308	Sprout					
Northeast Ohio	59.2	13.27	8.19	290	Sprout, Ave. vom = 0.55	7.87	0.430			Flour FN = 229
N. Central Ohio	59.0	13.00	8.00	290	Sprout, Ave. vom = 0.55	7.87	0.430			Flour FN = 229
N. Central Ohio	59.7	13.44		313	Sprout ~ 1.5%	7.30	0.470			250(60g,450ml H ₂ O)
Northern Ohio	59.6	13.85	10.05	304	Sprout & mold (~0.94%); Vomitoxin = 1.32	7.09	0.420			525(60g,450ml H ₂ O)
MICHIGAN										
E. Central MI (White)	60.4	13.00	9.90	289	Vom. = 1.1					
Central MI (White)	59.8	12.00	8.70	260	Vom. = 0.7					
"Thumb" MI	61.3	13.60	9.30	314	Vom. = 1.8					
Michigan (White)		14.45	8.89	307	Vom = 0.5	8.00	0.450	88.0		482(60g,450ml H ₂ O)
Michigan		13.20	9.21	315	Vom = 0.4					
Eastern MI (White)	58.5	14.80	8.70	310	Vom = 0.6 ppm					
Central MI (White)	58.5	14.80	8.70	310	Vom = 0.6 ppm					
Michigan	60.2	13.14		324	Vom = 1.4	8.17	0.473			513(60g,450ml H ₂ O)
Michigan (White)	60.8	12.70		320	Sprout (~2%); Vomitoxin = 0.5					
KENTUCKY										
Kentucky	59.9	13.53	10.14	341		8.35	0.465	60(Brook.)	85.5	Fl. Abs. = 53.5

WHEAT**ST. GRADE FLOUR**

ORIGIN	TEST WEIGHT	MOIST	PRO	FN	DAMAGE/AMT	PROTEIN	ASH	VISC.	COOKIE SPREAD	AMYLO
TENNESSEE										
Tennessee	59.9	13.53	10.14	341		8.35	0.465	60(Brook.)	85.5	Fl. Abs. = 53.5
S. Central TN	58.0	12.80	9.3 - 10.0	320	Vomi, Low FN (~30%)	8.30	0.480	46(McMich)	60.0	Abs. lower (50.0)
INDIANA										
Indiana	60.2	13.14		324	Vom = 1.4	8.05	0.473			401(60g,450ml H ₂ O)
VIRGINIA										
Virginia	59.5	13.24	9.17	296	DON = 0.72ppm	8.35	0.460			Flour FN = 299
Virginia	57.0	13.00	9.00	277	Vomitoxin = 0 - 10 ppm: Sprout, scab & insect bored kernels	8.16	0.480	1237	80	100(60g,450ml H ₂ O)
Virginia	59.1	13.10	9.90	336	VOM = 1.5 ppm					
MARYLAND										
Maryland	59.5	13.24	9.17	296	DON = 0.72ppm	8.35	0.460			Flour FN = 299
Maryland	59.9	13.40	9.20	356	VOM = 1.3 ppm					
PENNSYLVANIA										
Pennsylvania	58.9	12.70	10.00	322	VOM = 2.0 ppm					Flour FN = 333
ALABAMA										
Northeast AL	58.0	13.50	9.30	315	Vomi, Low FN (~30%)	8.30	0.480	46(McMich)	60.0	Abs. lower (50.0)
MISSISSIPPI										
Eastern MS	59.0	13.00	9.60	400						
NEW JERSEY										
New Jersey	58.1	12.60	9.96	335	VOM = 1.6 ppm					
CANADA										
Ontario (White)		13.19	9.29	315	Vom = 0.4					
Ontario		13.47	9.71	313	Vom = 0.7					
Western Ontario	59.8	12.60	9.30	294	Vom. = 0.4					

This report is for Soft Red Winter Wheat unless otherwise noted

Soft Winter Wheat Northwest Ohio



*Thank -
you*

