

**SOFT WINTER
WHEAT
CROP REPORT
2016**

**Compiled by Jan Levenhagen
The Mennel Milling Company**

U.S. WHEAT PRODUCTION BY CLASS (BUX1000)

	Previous 10 year average	2015	2016	% DIFFERENCE	10 year average % DIFFERENCE
HARD RED WINTER	886,512	830,446	1,081,690	30.25	22.02
HARD WHITE WINTER	15,237	16,109	25,476	58.15	67.20
SOFT RED WINTER	425,846	359,054	345,230	(3.85)	(18.93)
SOFT WHITE WINTER	198,928	169,081	219,136	29.60	10.16
DURUM	75,668	84,009	104,116	23.93	37.60
HARD RED SPRING	502,645	567,637	493,125	(13.13)	(1.89)
HARD WHITE SPRING	8,071	5,649	7,539	33.46	(6.59)
SOFT WHITE SPRING	30,850	29,954	33,363	11.38	8.15
TOTAL	2,143,757	2,061,939	2,309,675	12.01	7.74

Total U.S. wheat production, at 2.31 billion bushels is up 12% from last year, and up 7.7% from the previous 10 year average. The U.S. yield is 52.6 bushels per acre, up 9 bushels from last year and is a new record high.

Winter wheat production is at 1.67 billion bushels, up 22% from 2015. The U.S. yield is forecast at 55.3 bushels per acre, up 12.8 bushels from last year. If realized, this will be the highest yield on record for the United States .

Hard Red Winter production, at 1.08 billion bushels, is up 30.3% from last year and up 22% from the previous 10 year average.

Hard White Winter, at 25.5 million bushels, is up 58.2% from 2015 and up 67.2% from the previous 10 year average.

Soft Red Winter, at 345 million bushels, is down 3.8% from 2015 and down 18.9% from the previous 10 year average.

Soft White Winter, at 219 million bushels, is up 29.6% from last year and up 10.2% from the previous 10 year average.

Durum wheat production is at 104 million bushels, up 23.9% from 2015 and up 37.6% from the previous 10 year average. The U.S. yield is forecast at 44.0 bushels per acre, up 0.6 bushels from last year.

Other spring wheat production is at 534 million bushels, down 11% from last year. The U.S. yield is forecast at 47.2 bushels per acre, up 2 bushels from 2015. This is a record yield.

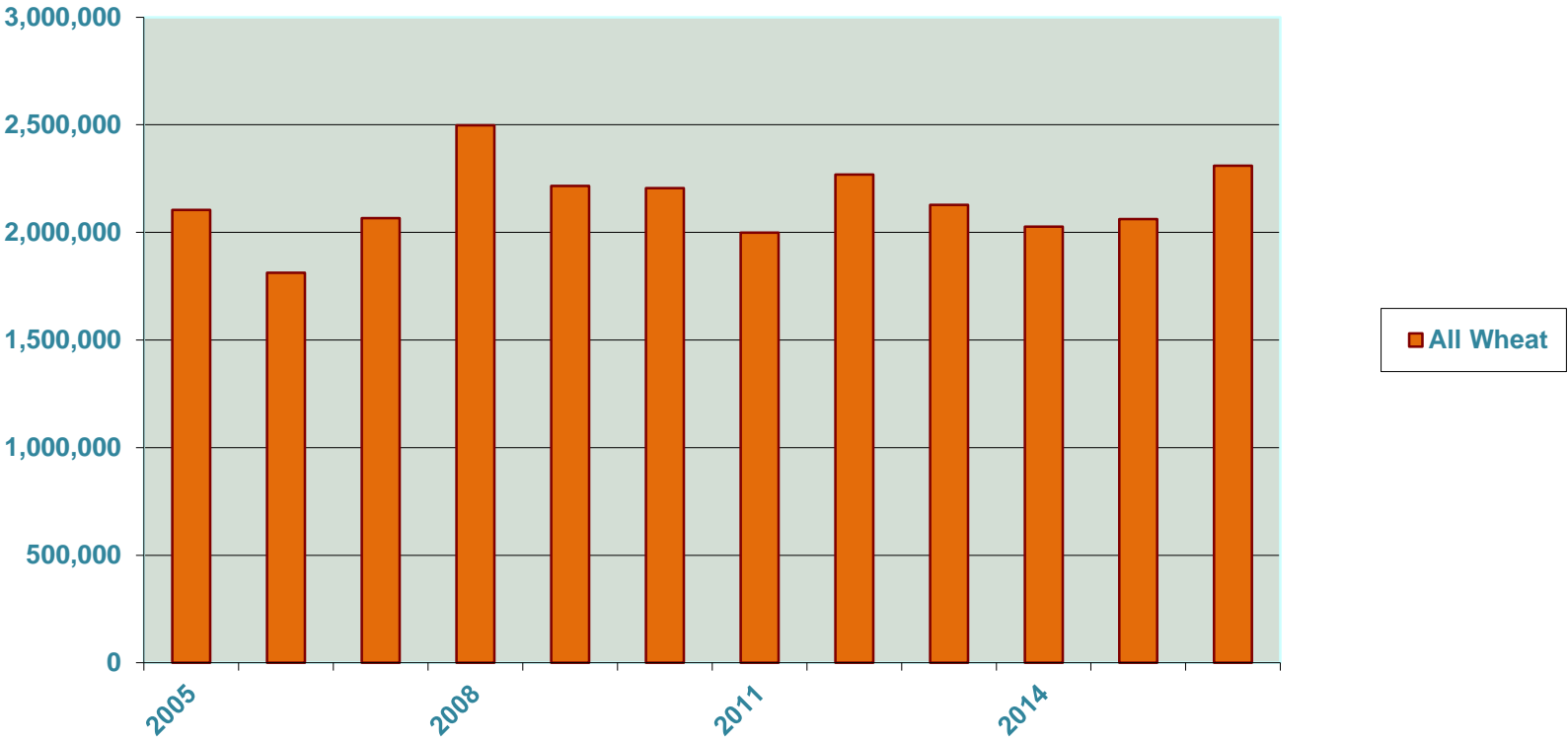
Hard Red Spring wheat at 493 billion is down 13.1% from last year and down 1.9% from the previous 10 year average.

Hard White Spring, at 7.5 million bushels, is up 33.5% from last year, but down 6.6% from the previous 10 year average.

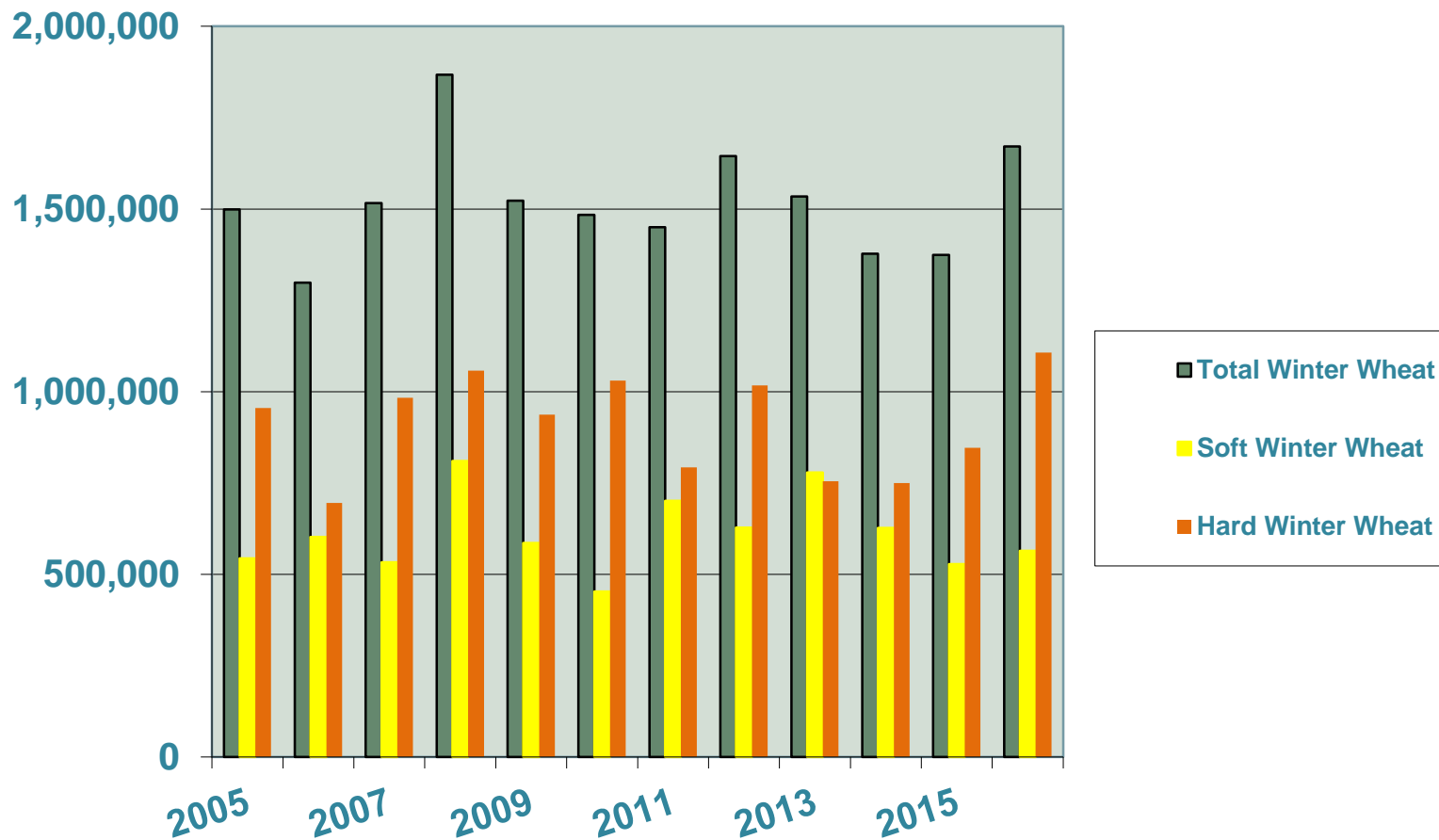
Soft White Spring, at 33.4 million bushels, is up 11.4% from 2015 and up 8.2% from the previous 10 year average.

NASS, USDA

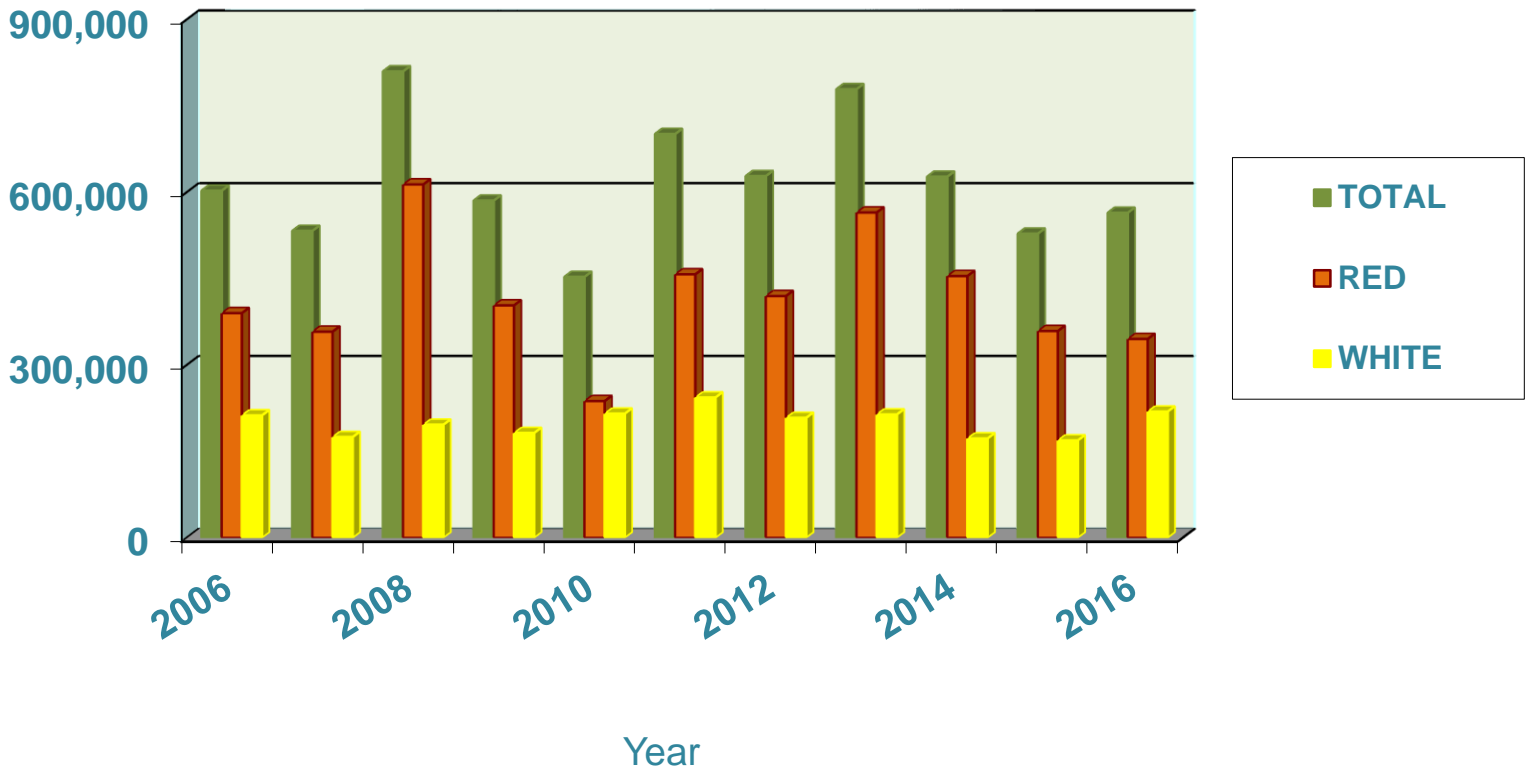
U.S. Wheat Production (X 1000 Bushels)



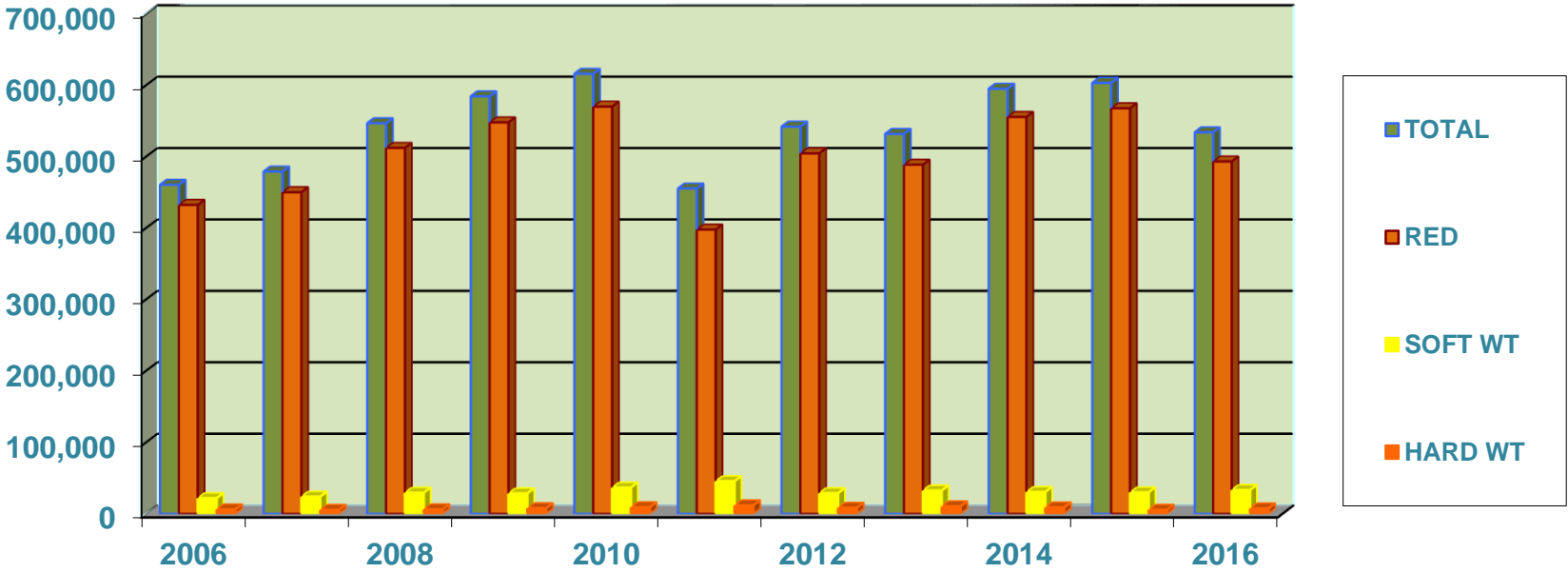
U.S. WINTER WHEAT PRODUCTION X 1000 BUSHEL



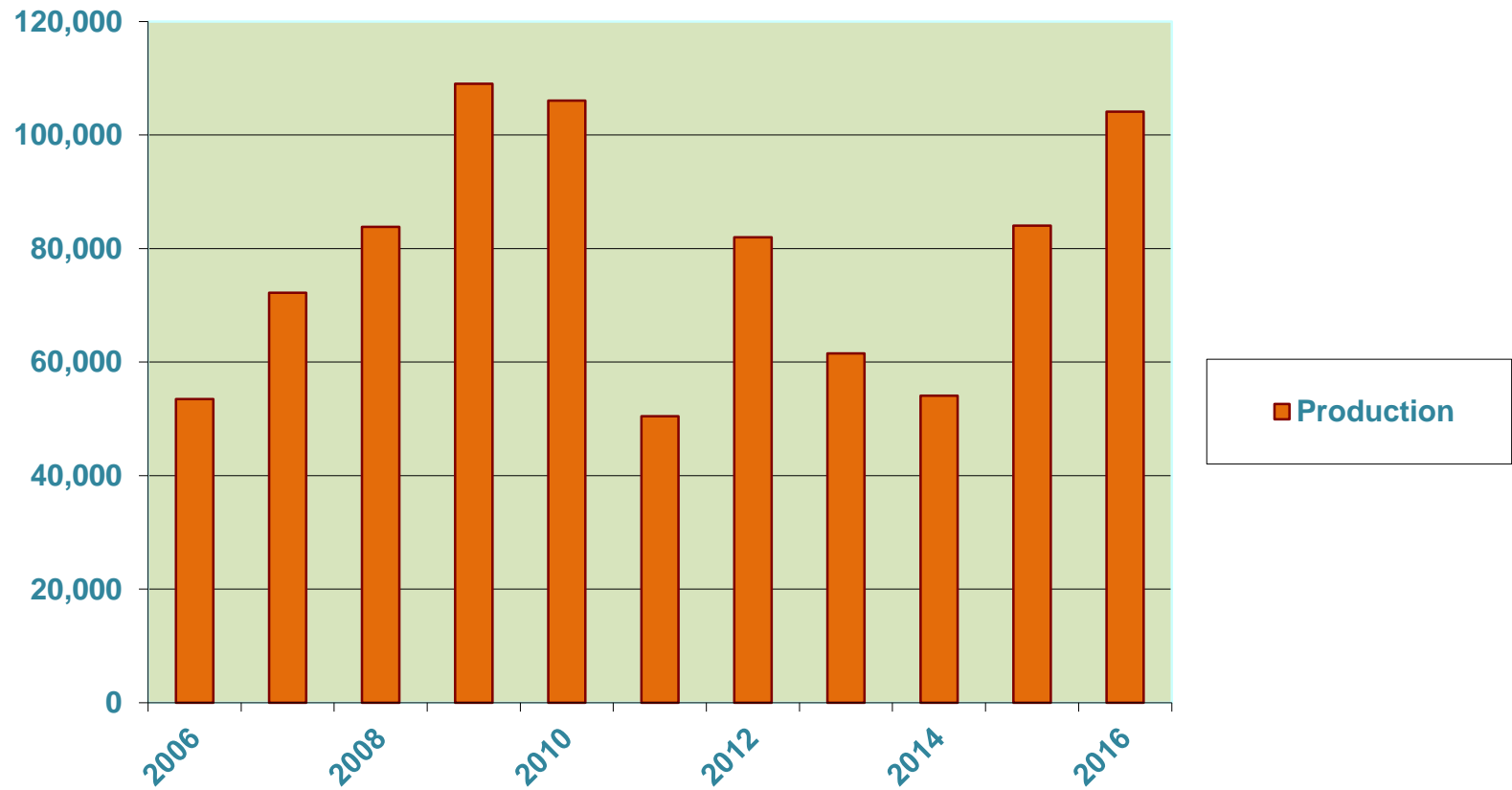
Soft Winter Wheat Production (X1000Bushels)



Spring Wheat



Durum



Canadian Production 2016

X 1000 Tonnes

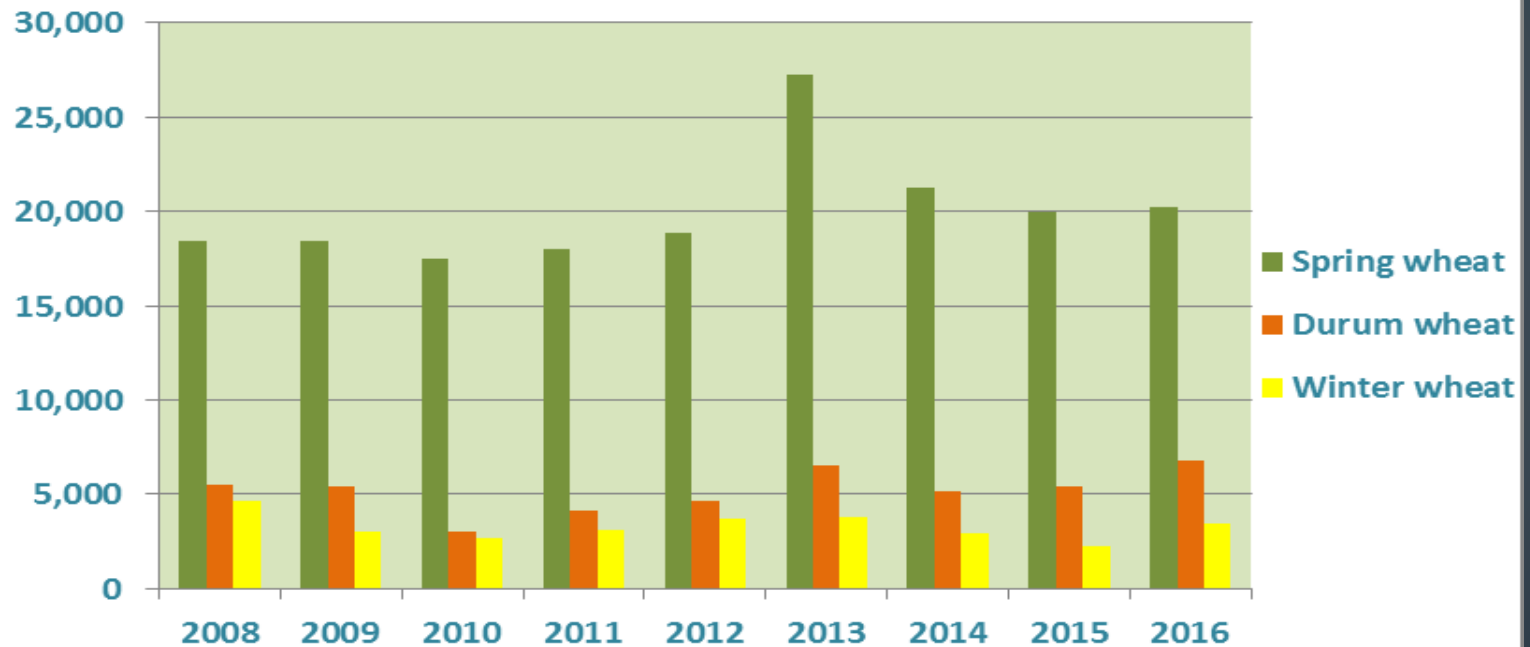
Crop	2008	2009	2010	2011	2012	2013	2014	2015	2016	2015 to 2016
									Est	% change
Total wheat	28,611	26,848	23,167	25,288	27,205	37,530	29,420	27,594	30,487	10.48
Spring wheat	18,405	18,452	17,485	18,019	18,845	27,239	21,298	19,962	20,247	1.42
Durum wheat	5,519	5,400	3,025	4,172	4,627	6,505	5,193	5,389	6,807	26.31
Winter wheat	4,687	2,996	2,657	3,097	3,733	3,786	2,929	2,243	3,434	53.07
Ontario WW				2,245	1,750	2,278	1,628	1,334	2,444	83.26
Quebec WW				10	18	25	21	37	55	49.32

Record High

Statistics Canada - Estimate of Production of Principal Field Crops

Total Canadian wheat production is forecast at 30,486,700 metric tonnes, up 10.5% from last year, including spring wheat at 20,246,500 tonnes, up 1.4%, durum at 6,806,600 tonnes, up 26% and winter wheat at 3,433,600 tonnes, up 53% from 2015. Winter wheat in Ontario is forecast to be up 83% and up 49% in Quebec. The average yield for winter wheat this year is expected 79.5 bu per acre.

Canadian Wheat Production X 1000 Tonnes



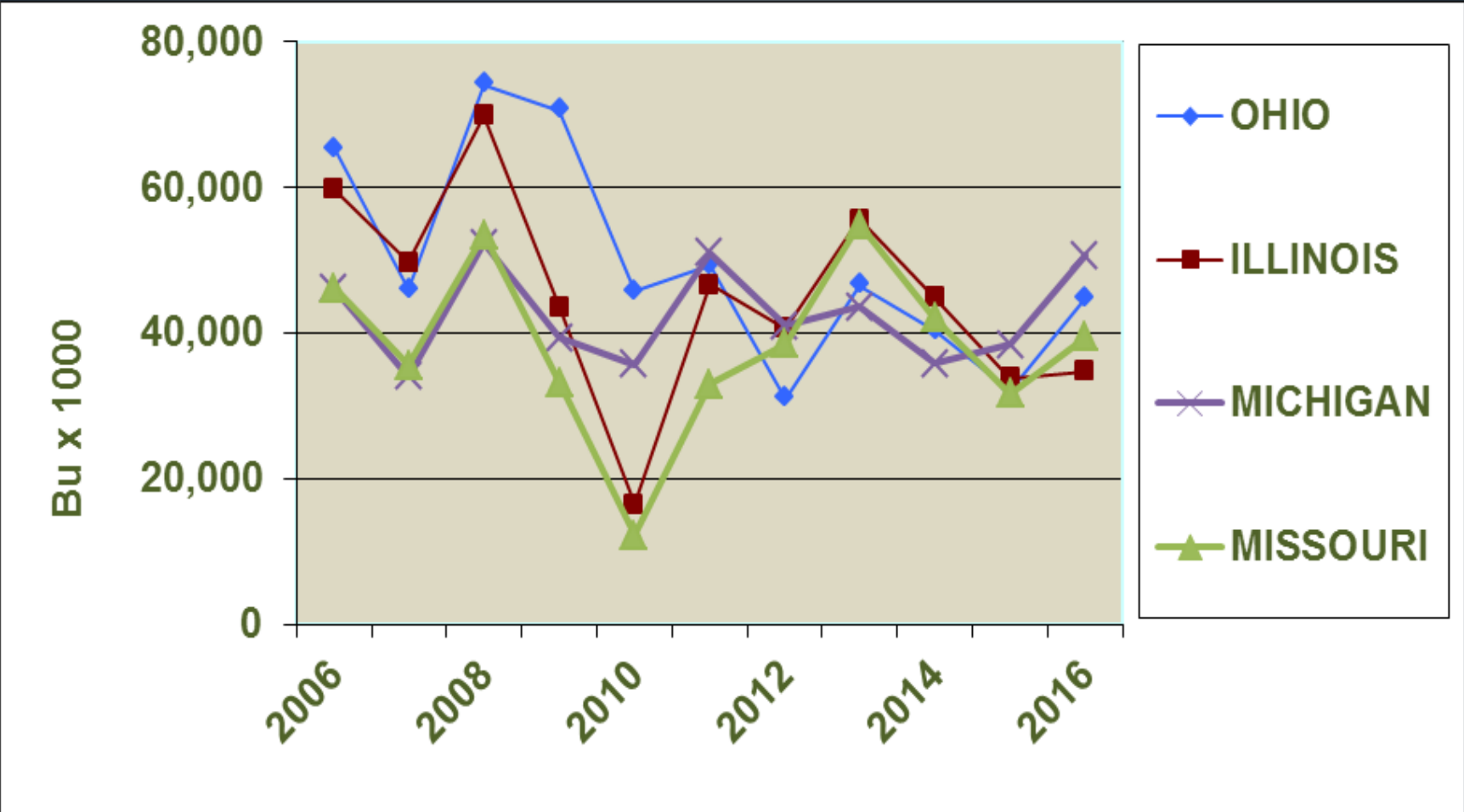
EASTERN UNITED STATES SOFT WINTER WHEAT PRODUCTION

	10 year ave.		2015		2016		PROD. DIFF (%)	10 year ave. PROD. DIFF (%)
	PRODUCTION X 1000 BU.	YIELD BU/ACRE	PRODUCTION X 1000 BU.	YIELD BU/ACRE	PRODUCTION X 1000 BU.	YIELD BU/ACRE		
MICHIGAN	41,745	73	38,475	81	50,730	89	31.9	21.5
OHIO	50,109	67	32,160	67	44,800	80	39.3	(10.6)
MISSOURI	38,087	51	31,683	53	39,501	70	24.7	3.7
ILLINOIS	46,113	62	33,800	65	34,780	74	2.9	(24.6)
KENTUCKY	27,970	67	32,120	73	32,000	80	(0.4)	14.4
TENNESSEE	22,212	61	26,860	68	24,455	73	(9.0)	10.1
INDIANA	25,558	67	17,680	68	22,680	81	28.3	(11.3)
WISCONSIN	17,843	68	14,918	74	18,960	79	27.1	6.3
MARYLAND	13,202	66	17,280	64	16,640	64	(3.7)	26.0
NORTH CAROLINA	34,298	54	30,210	53	14,555	41	(51.8)	(57.6)
ALABAMA	11,062	61	14,960	68	11,781	70	(21.3)	6.5
PENNSYLVANIA	9,784	61	11,261	65	10,200	68	(9.4)	4.3
VIRGINIA	14,557	64	13,860	66	9,275	53	(33.1)	(36.3)
NEW YORK	6,077	62	6,722	63	8,170	74	21.5	34.4
ARKANSAS	25,891	55	13,440	56	6,210	54	(53.8)	(76.0)
GEORGIA	11,364	48	6,235	43	5,060	46	(18.8)	(55.5)
DELAWARE	4,563	68	4,225	65	4,355	67	3.1	(4.6)
MISSISSIPPI	14,736	56	5,645	48	2,304	48	(59.2)	(84.4)
SOUTH CAROLINA	8,817	48	7,360	46	2,150	43	(70.8)	(75.6)
NEW JERSEY	1,427	53	1,000	50	1,344	64	34.4	(5.8)
LOUISIANA	10,940	54	3,588	39	900	45	(74.9)	(91.8)
FLORIDA	588	46	535	43	495	30	(7.6)	(15.8)
WEST VIRGINIA	334	58	230	60	237	61	2.7	(29.1)
TOTAL	437,274	60	364,249	60	361,581	63	(0.7)	(17.3)

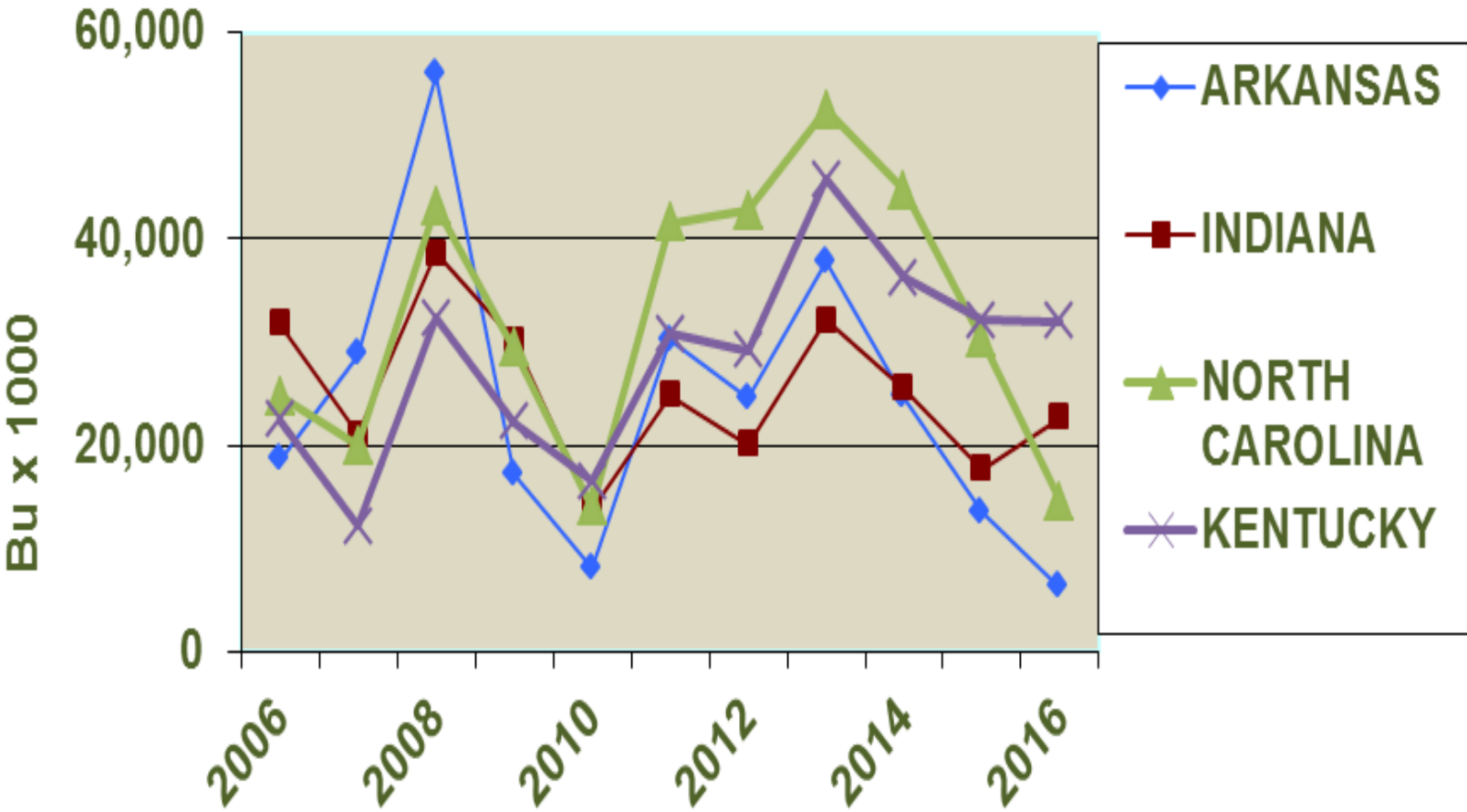
Record High

Record Low

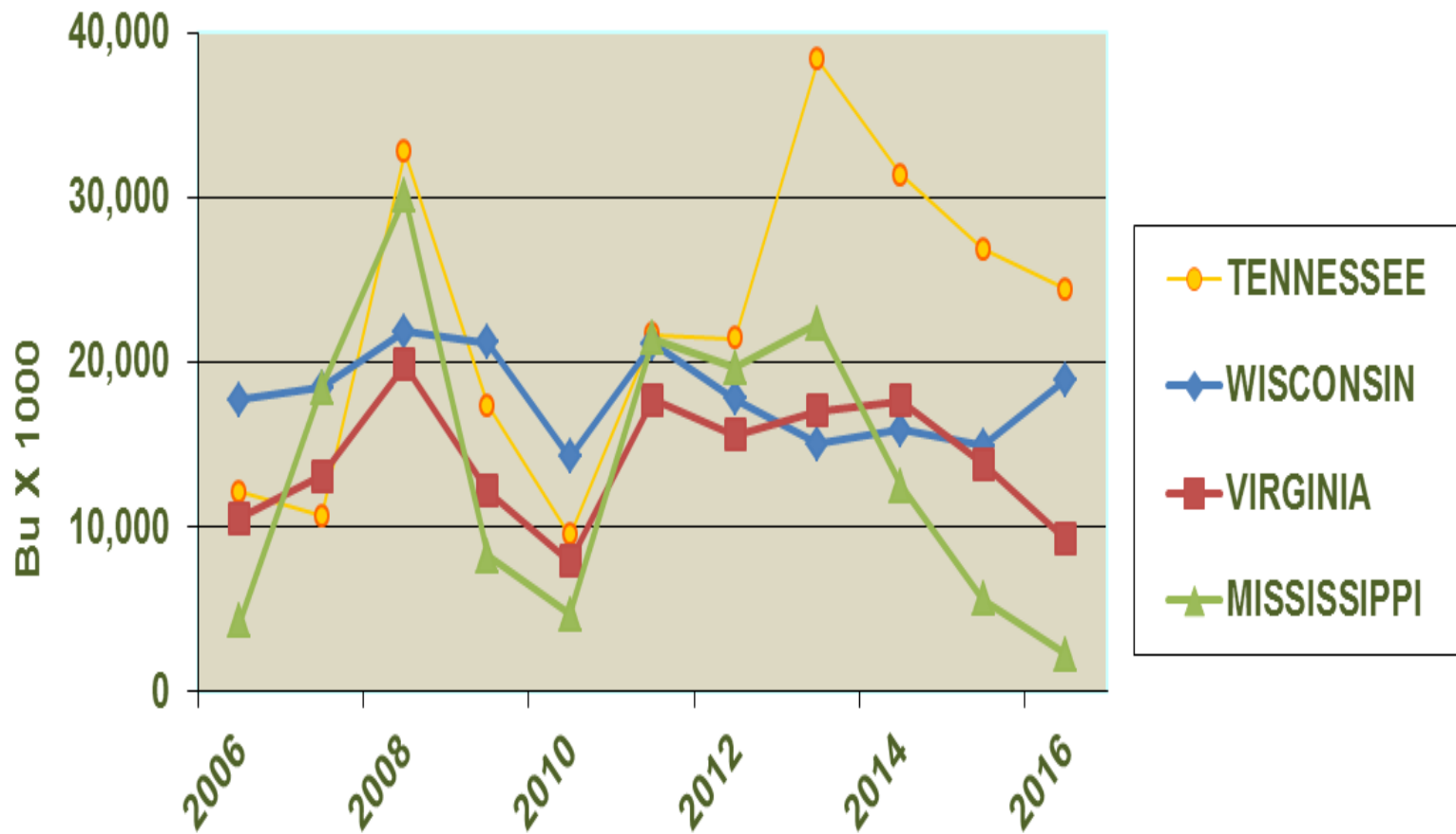
Top Eastern Soft Wheat Producing States



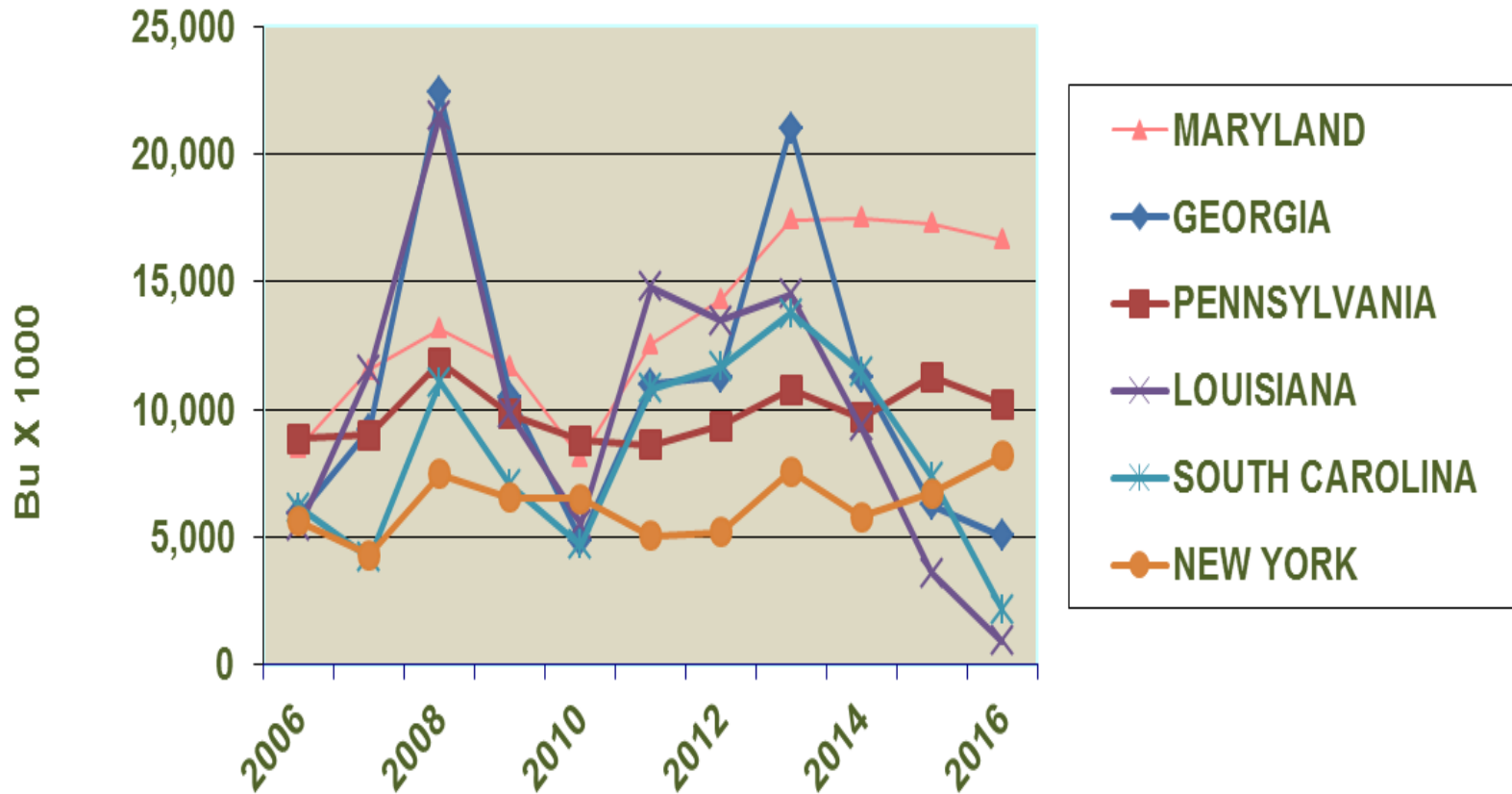
Eastern Soft Wheat Production



Eastern Soft Wheat Production



Eastern Soft Wheat Production



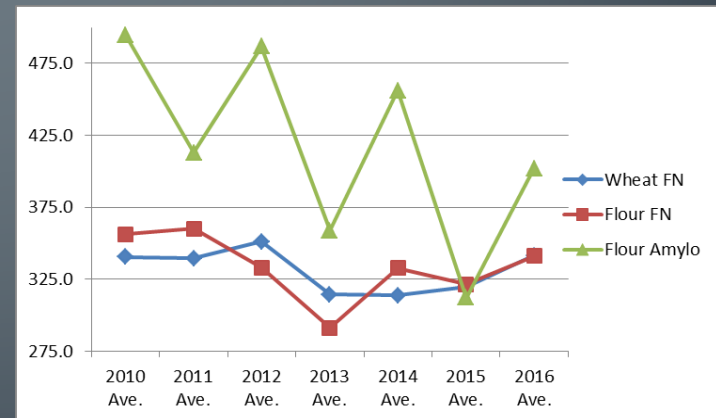
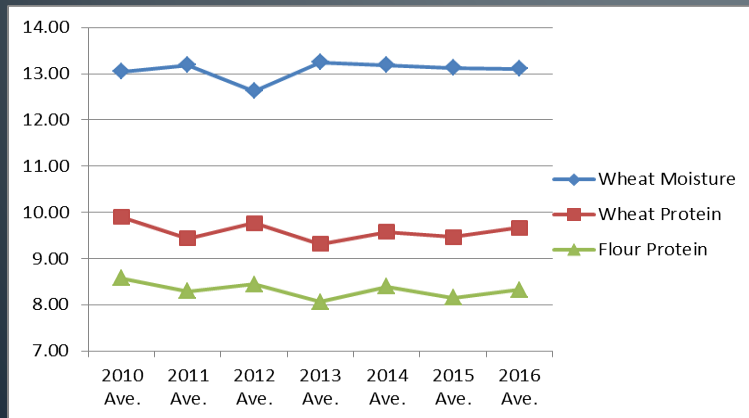
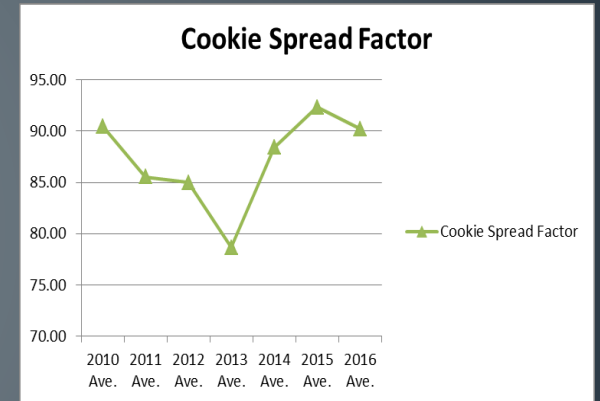
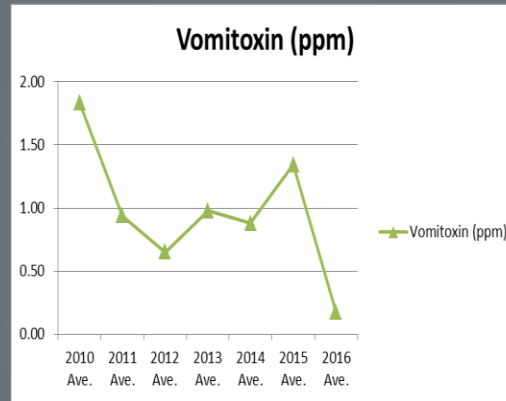
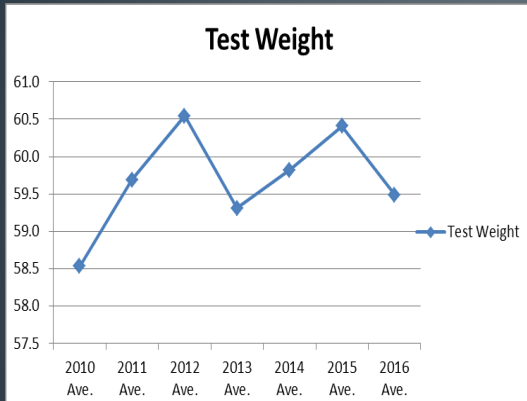
SOFT WHEAT CROP REPORT 2016

ORIGIN	TEST WEIGHT	MOIST	WHEAT		DAMAGE/AMT	PROTEIN	ASH	ST. GRADE FLOUR		
			PRO	FN				VISC.	COOKIE SPREAD	AMYLO
MICHIGAN										
W. Central MI	60.0	13.30	8.60	400	Vom. = 0, FM = 0.4					SRC
E. Michigan (White)	60.3	15.18	9.08	336	None	7.60	0.467		98.2	480(60g,450ml H ₂ O) Water 52.87
NE Michigan	61.2	12.20	9.40	389	Vom. = 0, FM = 0.4					Sucrose 94.75
E. Michigan	60.2	13.46	8.20	335	None					Lactic 97.81
SE Michigan	60.6	13.00	9.20	438	Vom. = 0.1, FM = 0.4					NaCO ₄ 69.73
Central MI	59.5	12.60	9.70		DON = 0.02, FM = 0.4					
Michigan	60.1	13.30	9.27	347		7.88	0.47		92.3	364(60g,450ml H ₂ O) Flour FN 356
Western MI (White)	61.1	13.20			DON = 0.1, FM = 0.1					
SW Thumb MI (White)	62.0	13.30		335	DON = 0.1, FM = 0.6					
NE Thumb MI (White)	62.4	12.30		409	DON = 0.1, FM = 0.2					
SE Michigan (White)	61.2	13.20	9.50	382	Vom. = 0.04, FM = 0.6					
NE Michigan (white)	61.8	12.90		423	Vom. = 0.1, FM = 0.8					
OHIO										
Northwest OH	61.6	13.44	9.30	355	Damage <1%	7.92	0.460	41.6 (McMich)	88.8	427(60g,450ml H ₂ O)
Southern Ohio	61.0	13.50	9.00	360		8.20	0.480	1200 (Brook)	85.0	430(60g,450ml H ₂ O)
South Central Ohio	58.0	12.50	9.50	340		8.20	0.480	1200 (Brook)	85.0	430(60g,450ml H ₂ O)
ILLINOIS										
					Minimum scab & spout					300(60g,450ml H ₂ O)
SE Central IL	57.8	12.44	8.50	316	Avg. vom = 1.13	7.53	0.465		93.2	500(65g,460ml buffer) Flour FN 312
W. Central IL	60.1	12.70		355	None	7.56	0.443			430(60g,450ml H ₂ O) Flour DON 0.51
Low protein crop. High field yields reported by farmers. Less than 1 ppm vomitoxin average										
INDIANA										
N. Indiana	59.5	13.31	9.77	331		7.88	0.47		92.3	364(60g,450ml H ₂ O) Flour FN 338

ORIGIN	<u>WHEAT</u>				<u>ST. GRADE FLOUR</u>					
	TEST WEIGHT	MOIST	PRO	FN	DAMAGE/AMT	PROTEIN	ASH	VISC.	COOKIE SPREAD	AMYLO
MARYLAND										
N. Central MD	61.1	13.05	10.38	321		8.50	0.500			
Central MD	58.7	13.01	9.42	305		8.50	0.500			
Central MD	58.4	12.97	9.83	306		8.50	0.500			
E. Central MD	58.4	13.63	9.27	340		8.50	0.500			
E. Central MD	56.3	13.35	9.11	341		8.50	0.500			
S. Central MD	61.2	12.95	10.27	339		8.50	0.500		Average of all areas	
S. Central MD	60.0	12.31	10.53	342		8.50	0.500			
Southern MD	59.3	13.21	9.65	332		8.50	0.500			
Eastern MD	60.3	12.66	10.61	333		8.50	0.500			
Eastern MD	56.8	13.15	9.89	316		8.50	0.500			
Eastern MD	57.1	12.54	10.38	333		8.50	0.500			
Eastern MD	59.7	13.66	9.34	341		8.50	0.500			
SE Maryland	58.3	13.38	9.97	336		8.50	0.500			
NE Maryland	56.8	12.39	8.93	294		8.50	0.500			
PENNSYLVANIA										
Pennsylvania	59.2	12.90	10.06	366	None (DON = 0.1 ppm)	8.40	0.500			
S. Eastern PA	61.0	12.93	10.46	344		8.50	0.500			
Pennsylvania	59.5	13.48	10.63	310		8.50	0.500			
S. Central PA	59.7	12.48	10.35	329		8.50	0.500		Average of all areas	
Pennsylvania	58.7	13.86	9.12	326		8.50	0.500			
Pennsylvania	59.7	13.20	9.60	315		8.50	0.500			
VIRGINIA										
Eastern Virginia	58.0	13.00	10.50	320		8.20	0.480	1200 (Brook)	85.0	430(60g,450ml H ₂ O)
Eastern Virginia	56.9	13.60	10.69	316		8.50	0.500			
NE Virginia	57.3	12.98	10.17	298		8.50	0.500		Average of all areas	
Eastern Virginia	58.7	13.53	9.69	337		8.50	0.500			
DELAWARE										
Central Delaware	57.2	13.31	10.08	315		8.50	0.500			
NEW JERSEY										
New Jersey	59.7	12.90	10.07	345	None (DON = 0.1 ppm)	8.40	0.490			
WEST VIRGINIA										
Central WV	59.6	13.65	9.29	326		8.50	0.500			
CANADA										
Canada	60.29	13.09	9.14	344		7.88	0.47		92.3	364(60g,450ml H ₂ O) Flour FN 358

This report is for Soft Red Winter Wheat unless otherwise noted

Eastern Soft Winter Wheat Comparisons



Thank You